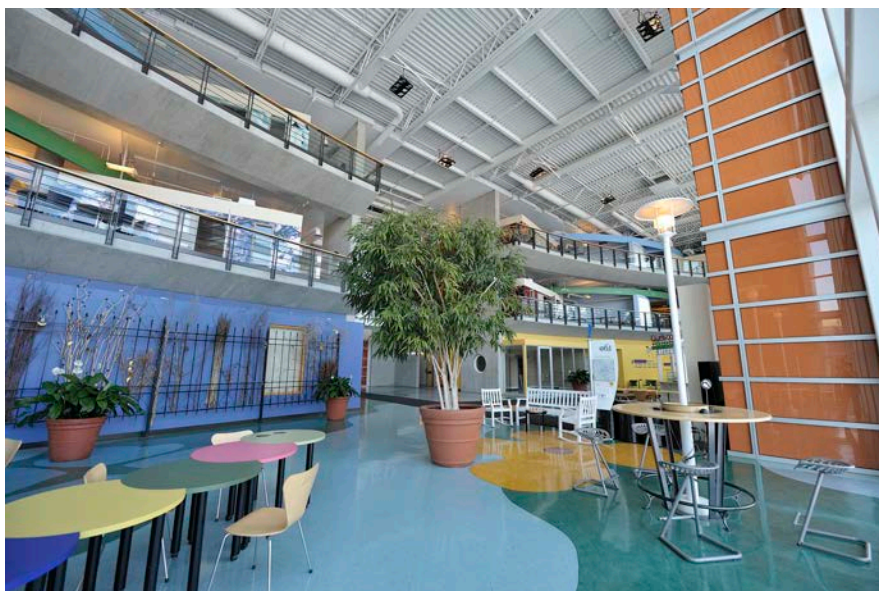


## Challenges of Relocation and Consolidation

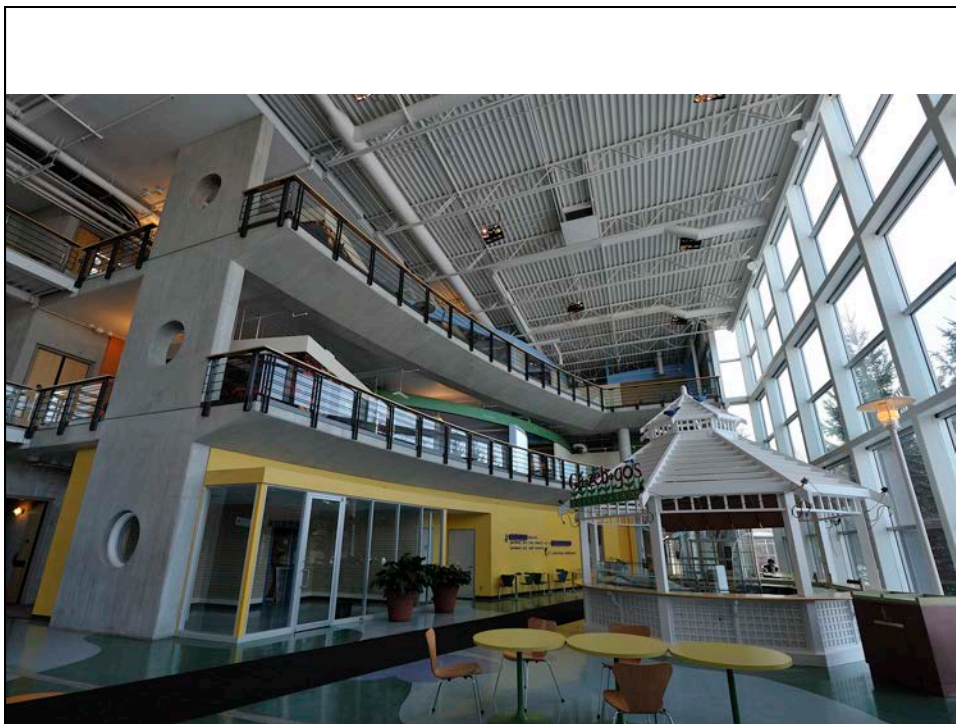


Dan Godbout



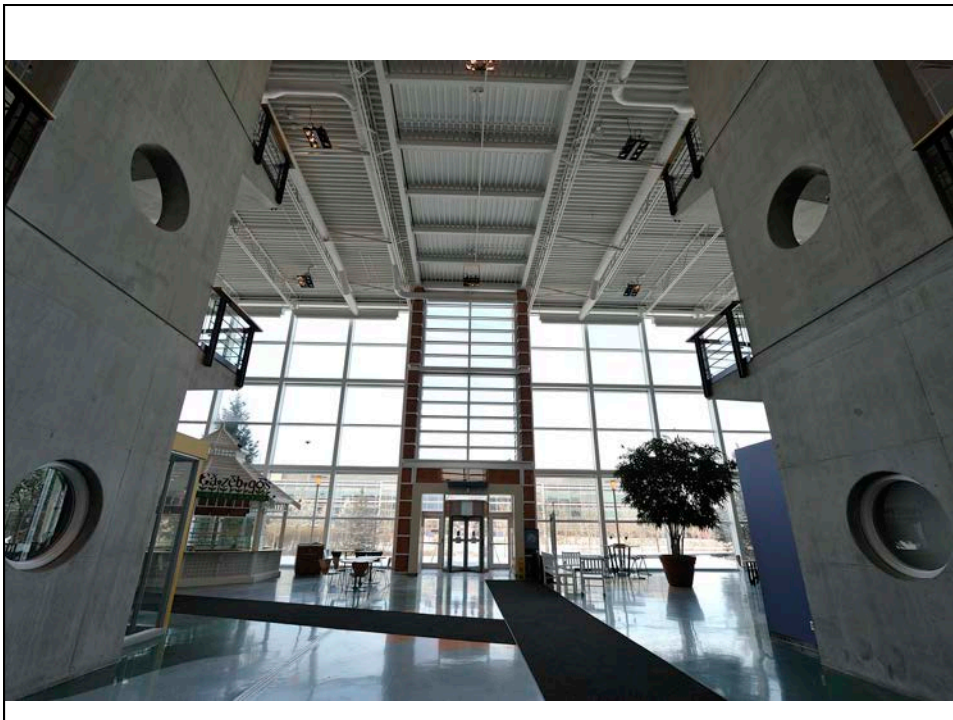
## CAVEAT

- TB Authority
- PCRA 4
- Scrutiny
- No numbers in the presentation
- IP 13



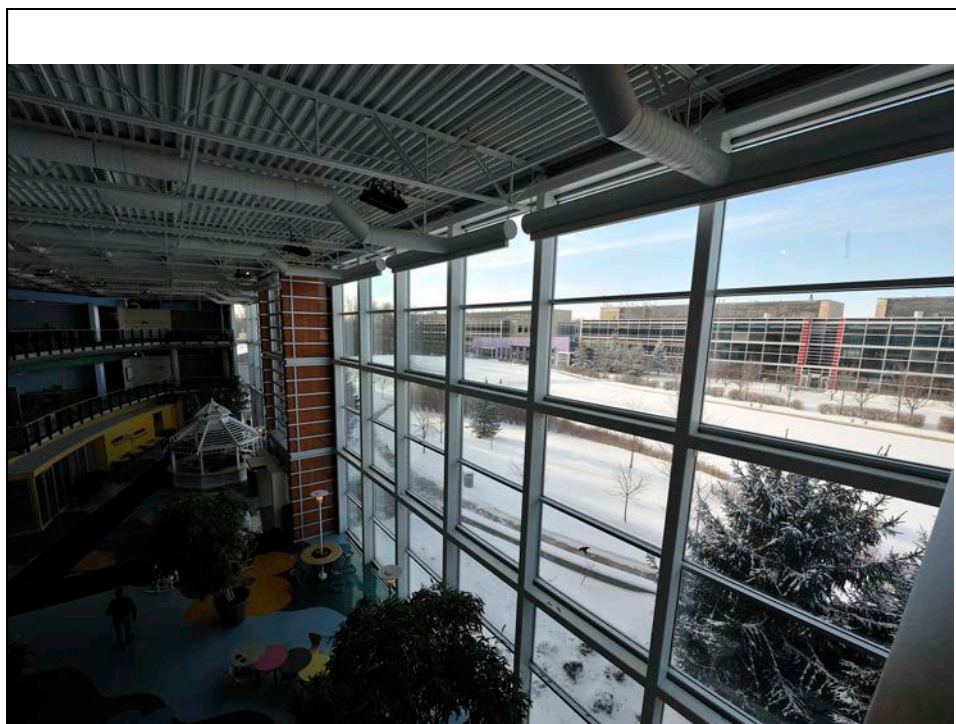
## Overview

- Introduction
- Relocation
- Transformation
- Consolidation
- Challenges
  - Money, Suburb, Timelines, IM/IT
- Opportunities – WP 2.0
- Conclusion/questions



## Introduction

- CF Mission
- DND as a Department (25,000 +70,000+35,000)
- Integration of both (CDS vs DM)
- Large, complexity of Defence business, service to Canadians behind the scene, Flag abroad, directly to Canadians (Search & Rescue, Disasters), support internationally (Haiti)
- Where does RP fit in, Custodian/Tenant



## Relocation

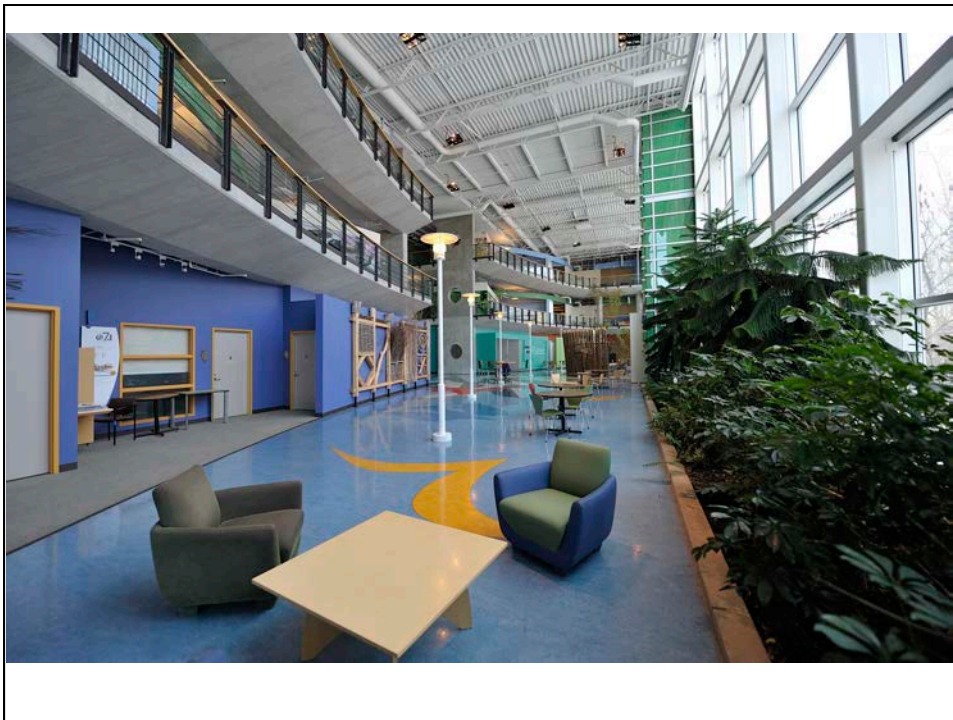
- NDHQ throughout the years
- Integration
- IRP 94/95
- Army, Navy, Air Force, Special Forces, Operations

## Transformation

- Transformation part 2, Leslie Report
- Operational Headquarters down to one
  - Not part of Campus
- Transformation as a Department
- Need to move now
  - Will continue to evolve
  - Need to have adaptable space

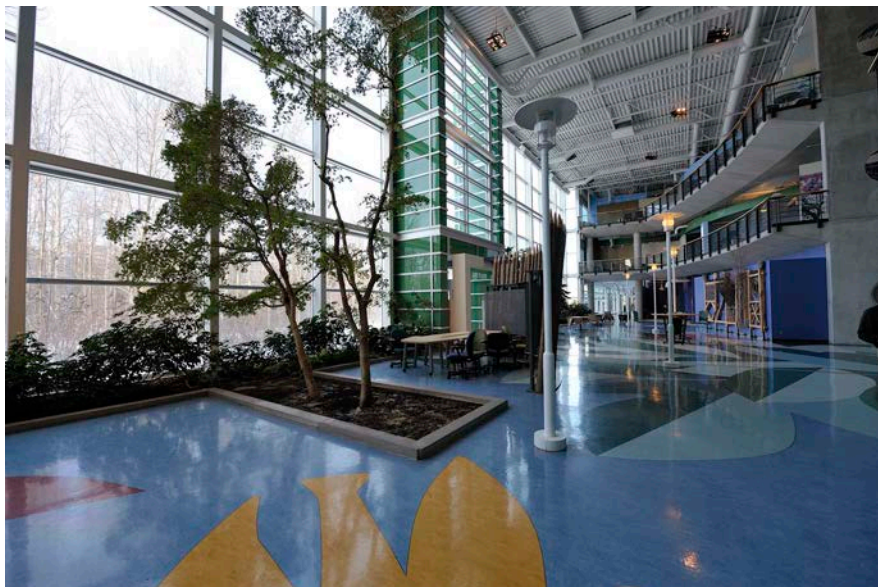
## Consolidation

- Departmental HQ requirement - 370,000 m2R
- 66 leases in 42 locations and 6 crown-owned buildings (plus one DND owned surplus building)
- Reimbursing and non-reimbursing
- 3 nodes:
  - 101 Col By + 3-4 leases downtown
  - Gatineau (Louis St-Laurent, 325 Boul de la Carriere)
  - Campus



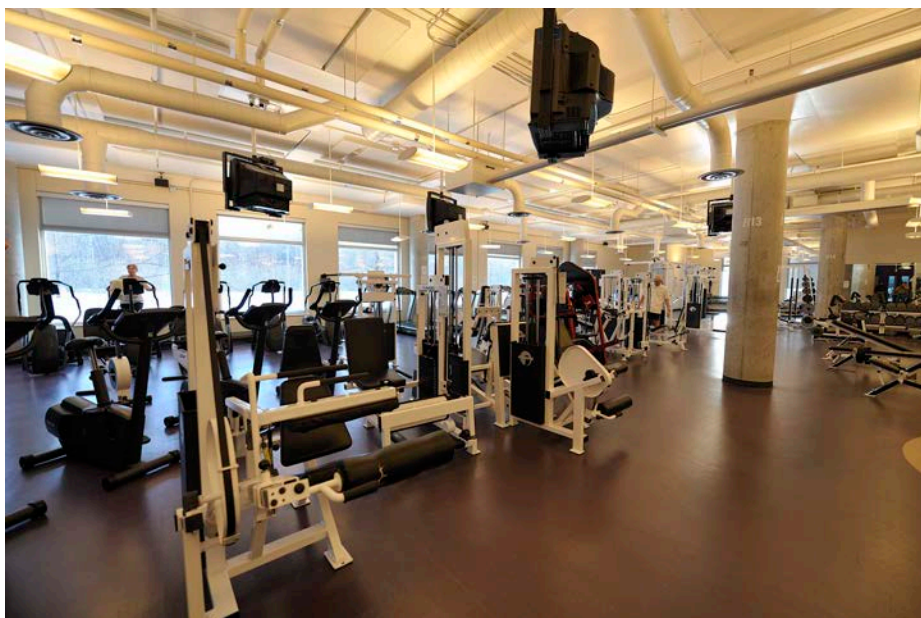
## Carling Campus

- Campus 186,121 m<sup>2</sup>R (161,373 m<sup>2</sup>U)
- Admin networks and operational networks
- 2 buildings aren't usable for office accommodation (12,054 m<sup>2</sup>R)
- Modern space, updated until 2000
- Not necessarily an office set up
  - Labs
  - manufacturing

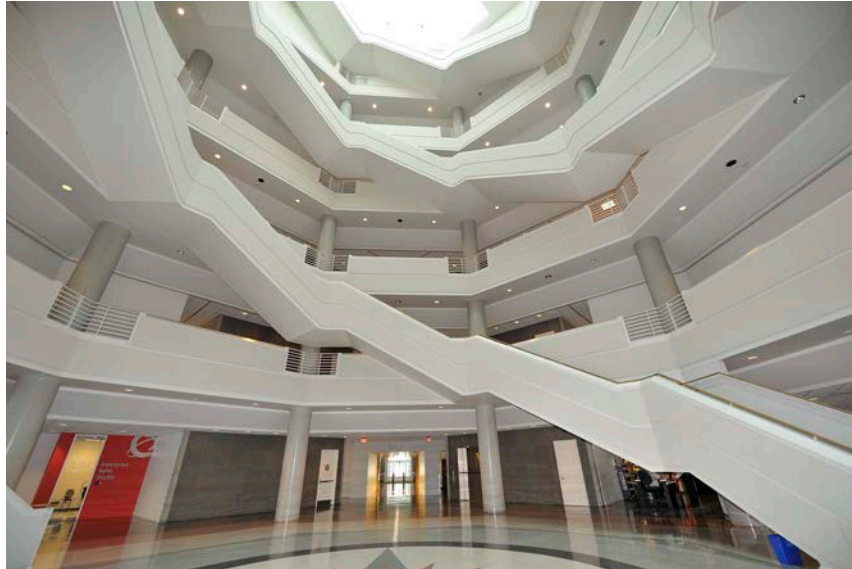


## Challenges

- Money
  - Estimates (ROM, Indicative, Substantive)
  - Estimates versus reality
  - Innovation in presenting estimates
  - Definition of fit up
  - Scrutiny
    - PCO-PMO-TBS-Public
    - \$300/m2, \$496/m2,
    - NHCAP Skyline - \$2033/m2, RCMP 3000 Merivale - \$1714/m2, Campus - \$xxxx/m2

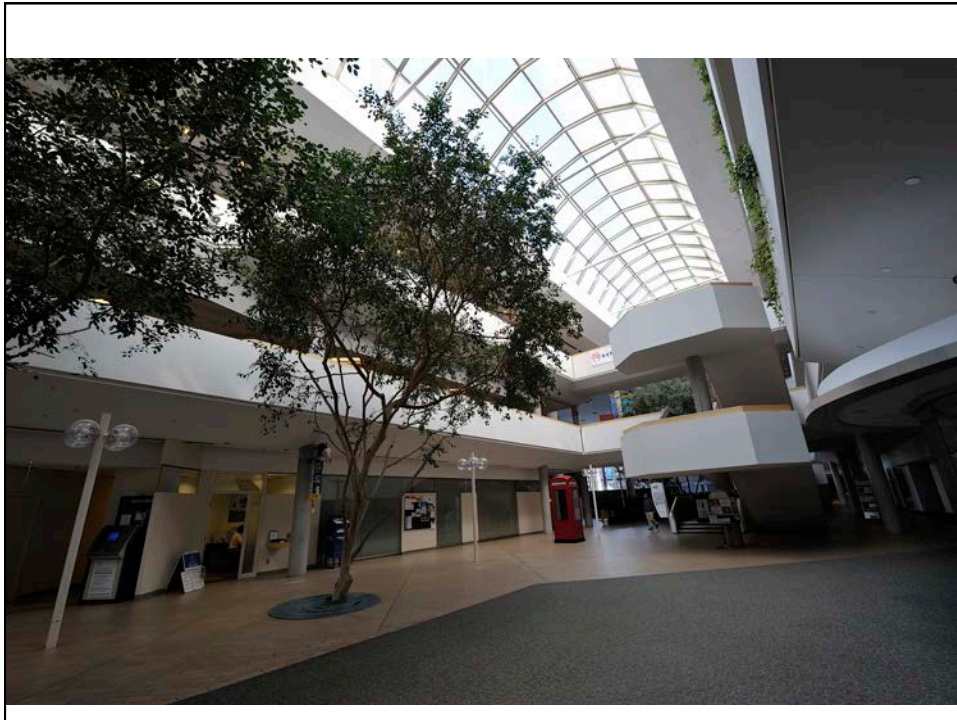






## Challenges

- Suburb
  - Employees (CF vs Civilians)
  - Downtown comfort
  - Surrounding suburbs (Orleans)
  - Transport
  - Greenbelt
  - Savings



## Challenges

- Timelines
  - Bought Campus Dec 2010
  - Authority – Dec 2012
  - First move Winter 2014
  - 3 Phases – leases until Apr 2016
  - Terminate 2019
  - Certainty - move back to 2005



## Challenges

- IM/IT
  - Nortel
  - Networks versus labs
  - Codes
  - Discipline
  - Operational networks - Allies



## Opportunities

- Workplace 2.0
  - Space
    - According to what employees do and time spent in the office
  - Back Office
    - Systems, VHD, wireless,
  - Collaboration
    - Face to face, telepresence, skype

## Opportunities

- Security
- Stability
- Ownership
- Branding
- Pride
- Savings – conservatively - \$900M over 25 yrs
- Collaboration PWGSC-SSC-DND

## Conclusion

- Opportunity
- Difficult but not insurmountable
- Enthusiasm
- Right the first time
- WP 2.0
- Better in the long run

## Questions

